



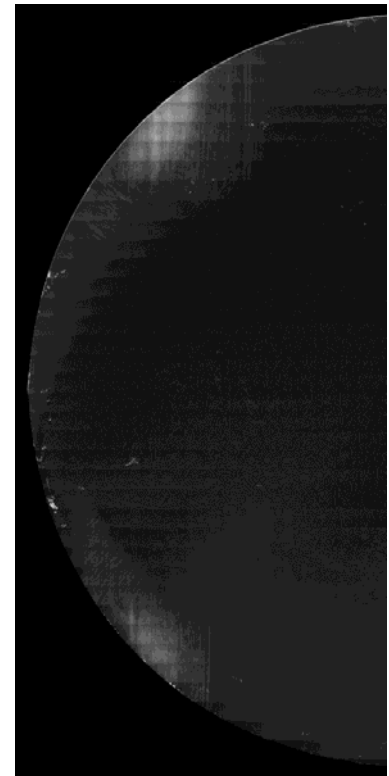
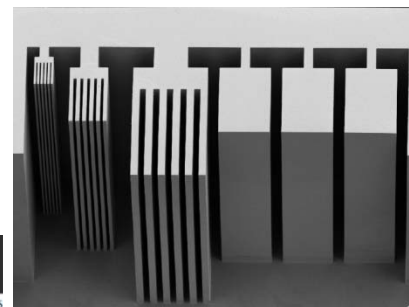
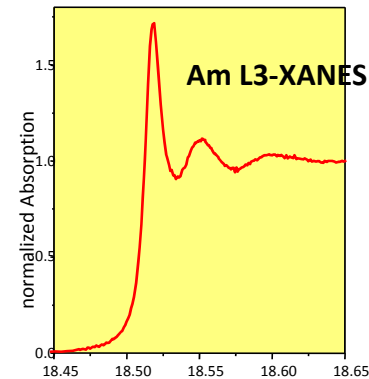
ANKA Commercial Services (ANKA-CoS)

- ANKA Synchrotron Radiation Facility @ KIT (2.5 GeV, Ø 35m, 17 beamlines)
- ANKA-CoS: 2 employees, 200 T€ turnover in 2013
- 35 unique customers since 2003
- DIN ISO 9001 certification



Bottlenecks and challenges

- **Bottlenecks**
 - higher priority for scientific activities
 - no protein crystallography @ ANKA
- **Challenges**
 - focus on white beam topography
 - focus on XAS
 - focus on X-Ray LIGA micro fabrication





Looking to the Future

- Increase customer satisfaction
- More standard analytic projects
- Joint European actions:
 - to exchange information and experiences
 - to organize joint marketing actions
 - to route clients to other facilities