

SYNERGY

Synchrotron and Neutron Research Gateway

Large Scale Facilities

BER II

BESSY II

Neutron

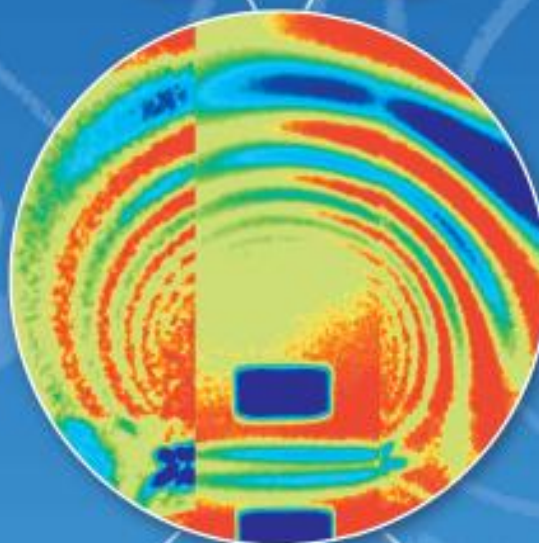
Facility at BER II

- > Single crystal and powder diffractometers
- > Stress and texture analysis
- > Triple-axis spectrometers
- > SANS, VSANS
- > Reflectometers
- > Time-of-flight spectrometer
- > Spin-echo spectrometer
- > Radiography and tomography
- > Neutron activation analysis
- > Irradiation services
- > World leading sample environment

Synchrotron

Facility at BESSY II

- > Synchrotron radiation for time resolved experiments (50 ps to 100 fs)
- > Photoelectron spectroscopy
- > Transmission X-ray microscopy and tomography
- > IR/THz-Microscopy
- > Resonant inelastic X-ray scattering
- > Fluorescence spectroscopy
- > Magnetic scattering
- > XUV-Diffraction
- > Macromolecular crystallography
- > Reflectometry
- > Interferometry



HZB LabCluster

- > MagLab - LaMMB
- > BioLab
- > GasLab - DEGAS
- > X-Lab
- > Crystal-Lab



Lise-Meitner Campus
Berlin-Wannsee

Wilhelm-Conrad-Röntgen-Campus
Berlin-Adlershof



Wannsee
BER II Reactor



Adlershof
BESSY II



Short facts

Employees: approximately 1100 staff, of whom 800 work at Wannsee and 300 at Adlershof.

Budget: of about 110 million Euros.

Guest scientists: more than 2500 external scientists (from 35 countries to date) to access measuring

Cooperations: more than 400 partners at German and international universities, research institutions and in companies.



Wannsee
BER II Reactor



Adlershof
BESSY II



Access for industrial users

- HZB supports interested parties with economic background using, respectively cooperating with BESSY II and BER II.
- Access is achieved by direct contact to individual research groups or scientists at the requested beamline or instrument at HZB or by request to the **User Coordination**.
- Approval of projects and respective allocation of beam time quotas is decided by the User Coordination in consultation with the Scientific Director.
- After approval of projects a contract is concluded with the **Third Party Funding department** of HZB.



Access for industrial users, current problems and challenges

- Lack of time and manpower for dedicated support (data analysis)
- Overbooking of beam times by scientific request

Access for industrial users, look into the future

- Dedicated ILO at HZB discussed
- Fast access routes discussed
- EU support in networking and visualize opportunities

