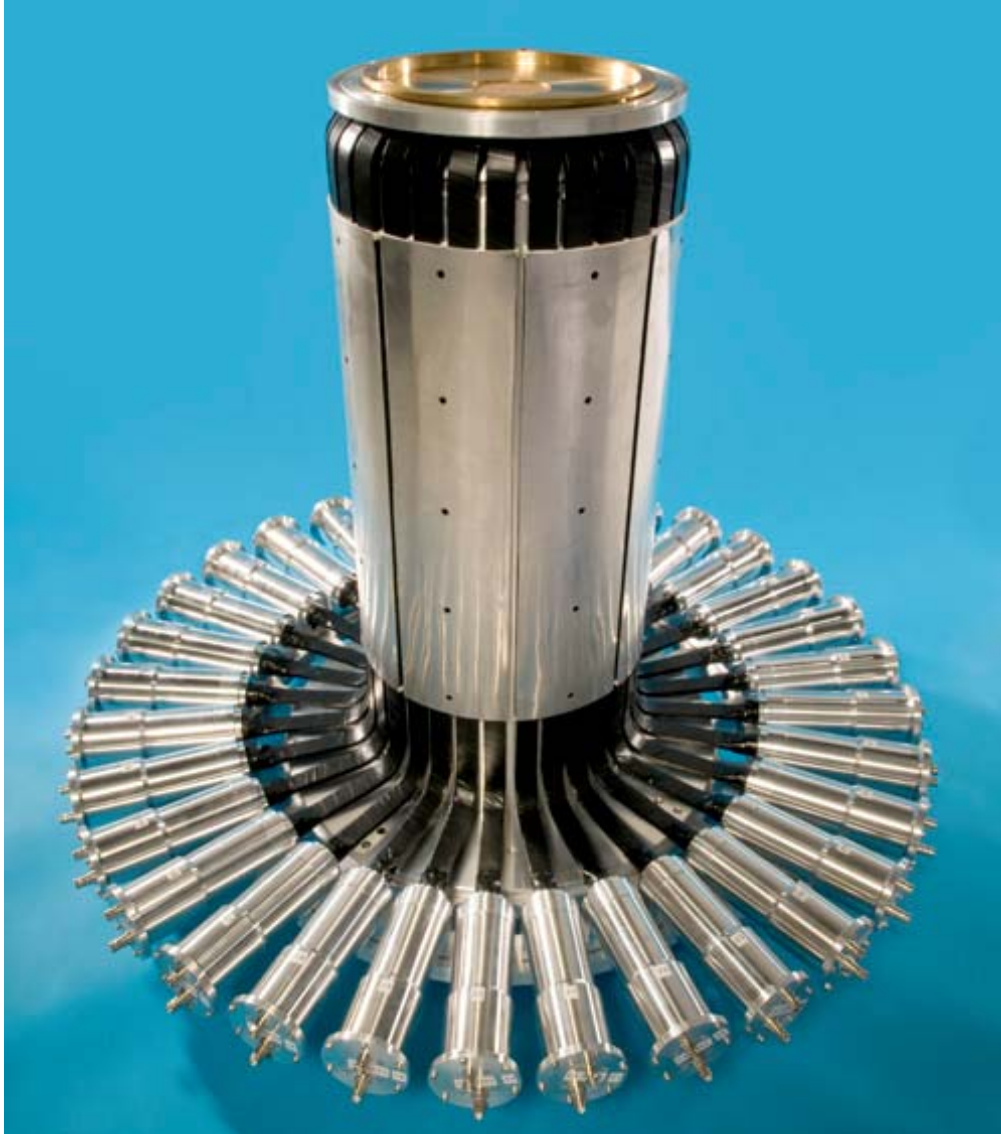
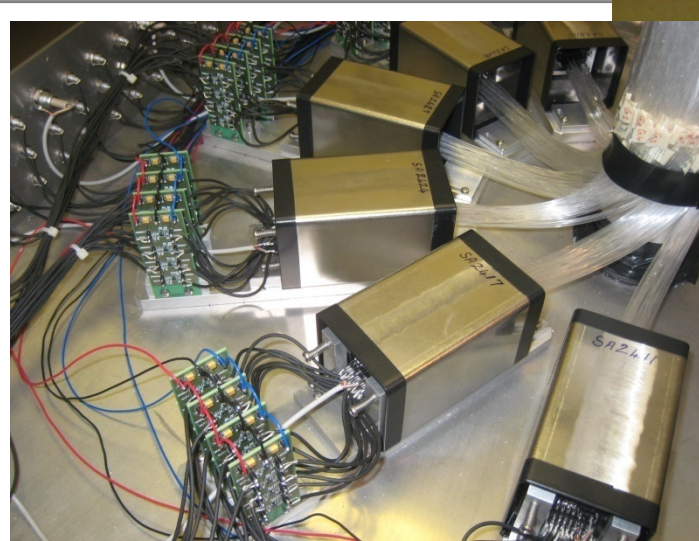


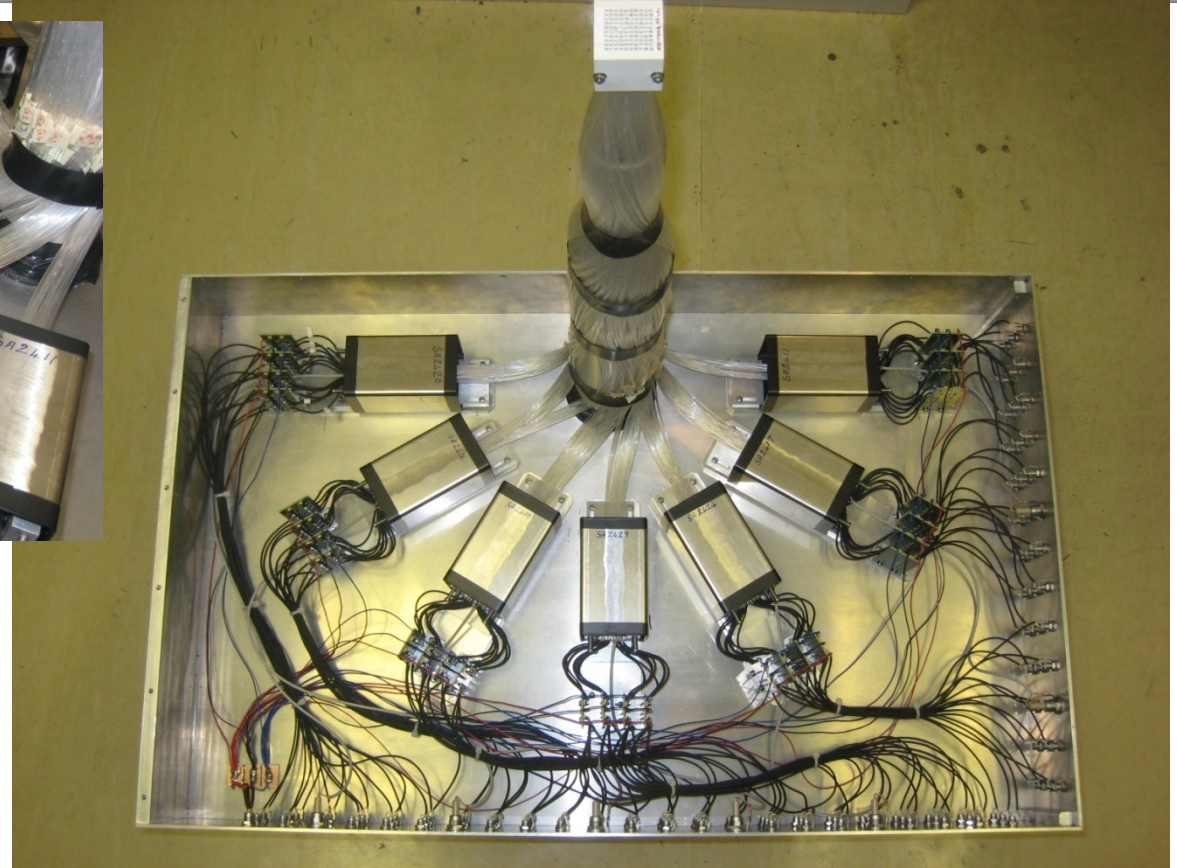
HiFi : A scintillation detector for muons



Ancient Charm – A detector for Cultural Heritage applications



1.8 x 1.8 mm²
pixels, 9 mm deep
on a 2.5 mm pitch



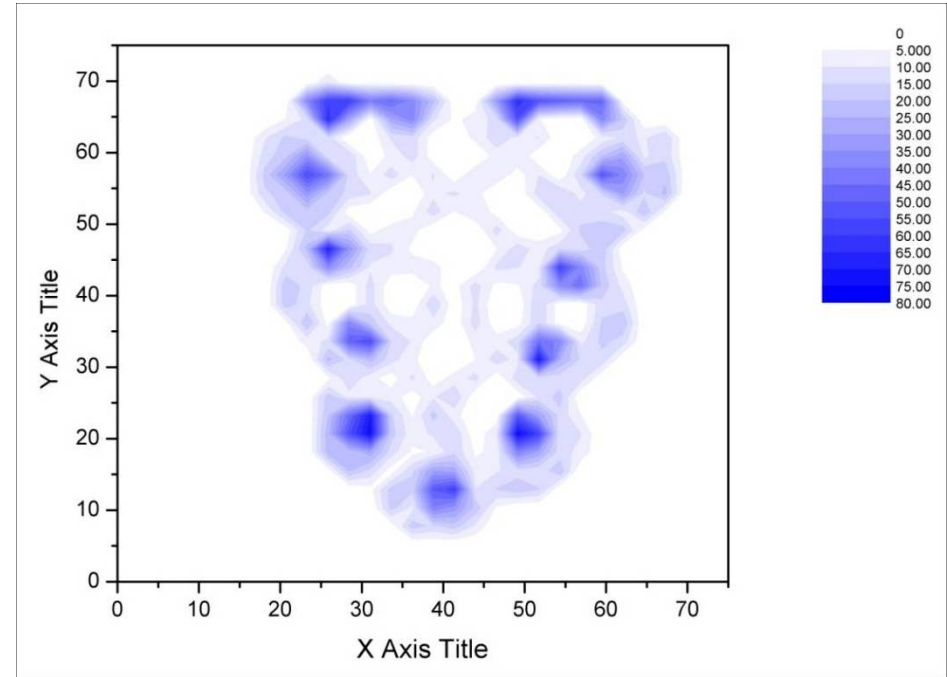
A 100 pixel detector for neutron resonance
transmission imaging



Science & Technology Facilities Council

ISIS

Ancient Charm – A detector for Cultural Heritage applications



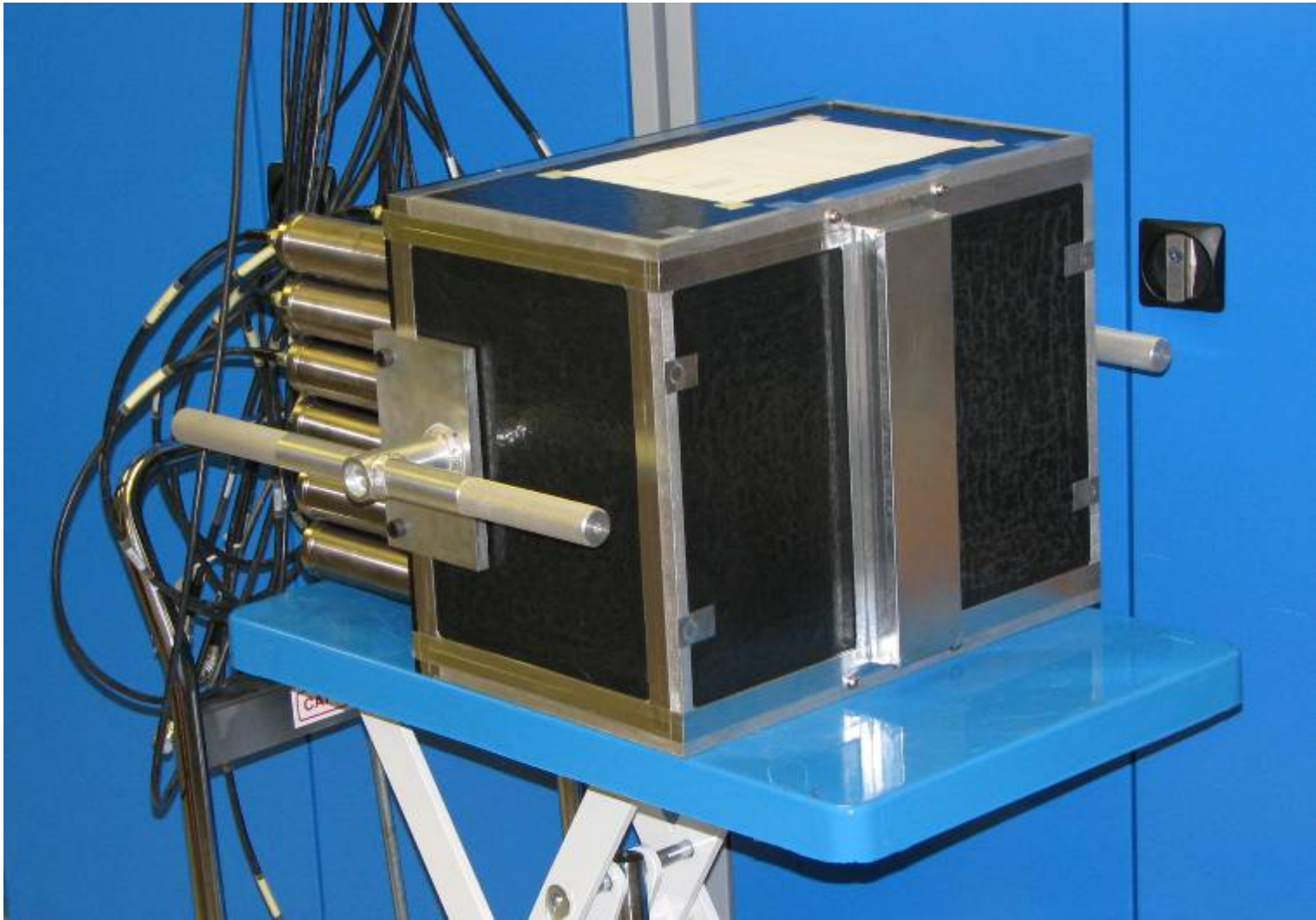
The map on the right shows the distribution of silver in this replication of a belt buckle



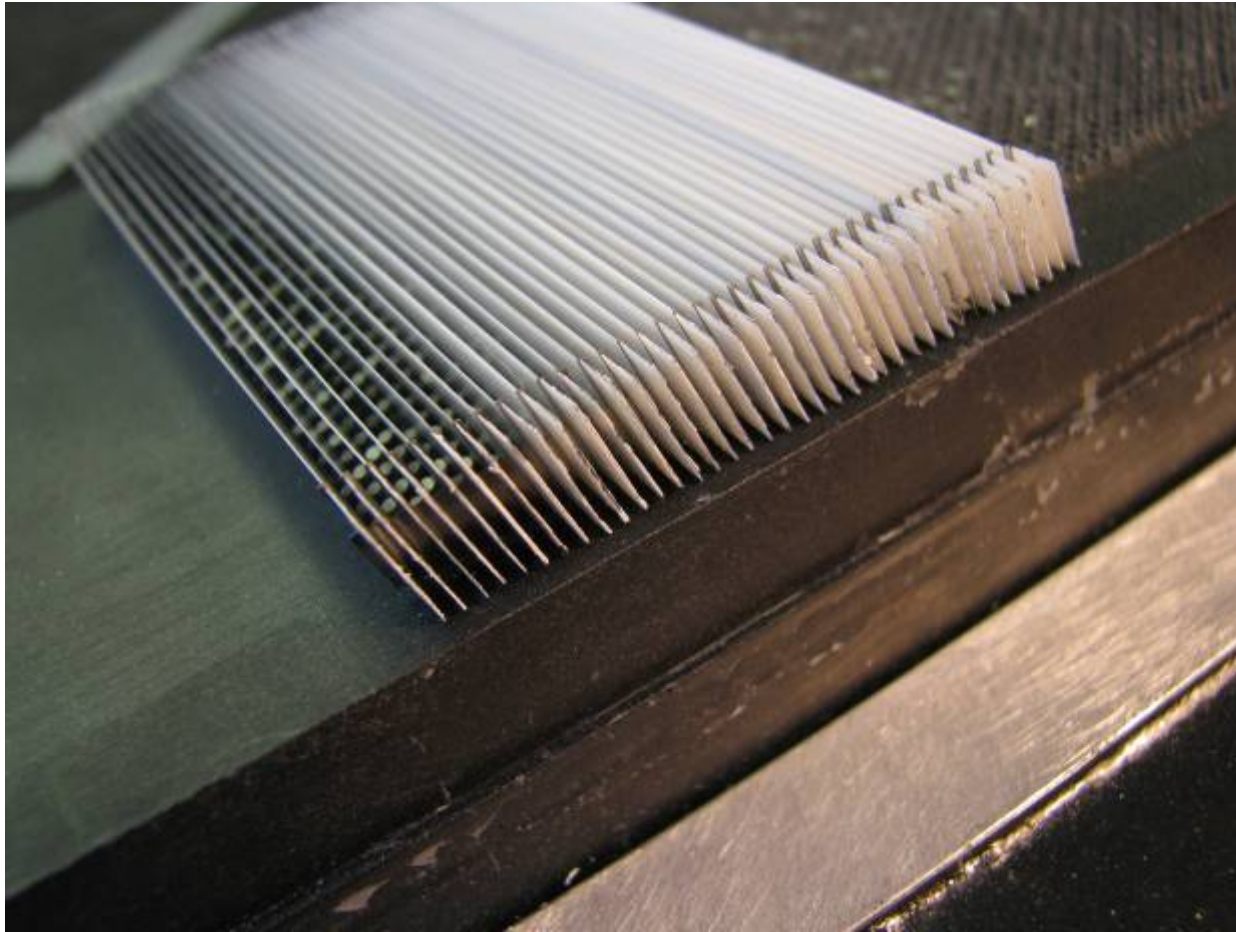
Science & Technology Facilities Council

ISIS

INTER 1.2 mm scintillation detector

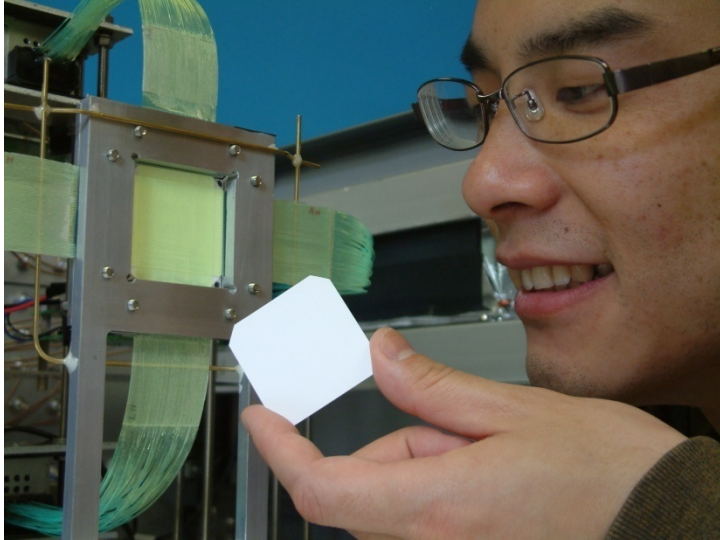


INTER 1.2 mm scintillation detector



Fibre coupled ZnS scintillation detector
Linear position sensitivity, 1.2 mm
resolution

WLS Fibre development



Carried out in collaboration with JAEA

Currently manufacturing a linear position sensitive WLS fibre detector for reflectometry

320 x 60 mm²

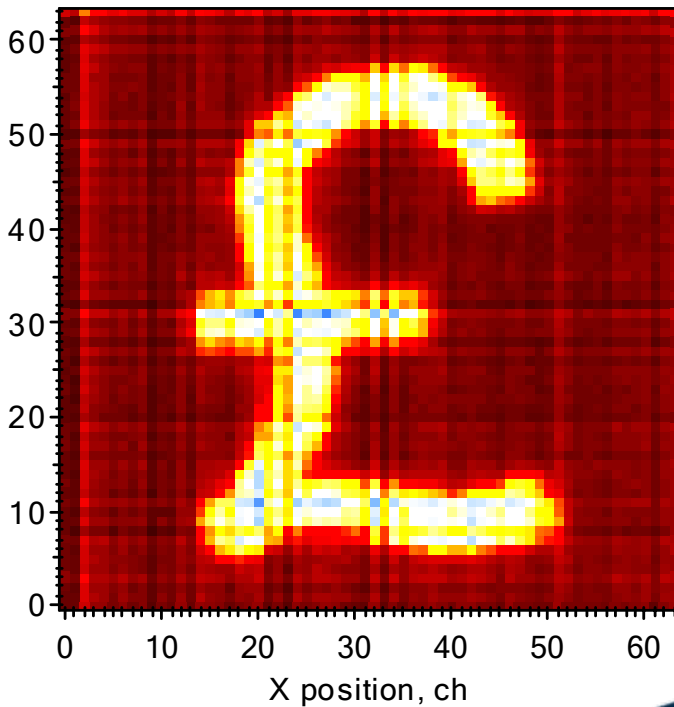
Mechanics and electronics in manufacture

Hope to start assembly in June

Linear position sensitivity ~ sub mm

Coded fibre array –

using twenty-four 16 channel MA PMTS



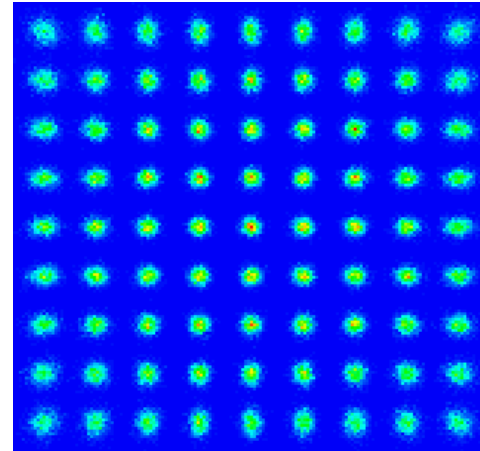
Science & Technology Facilities Council

ISIS

GSPC Simulation and measurement

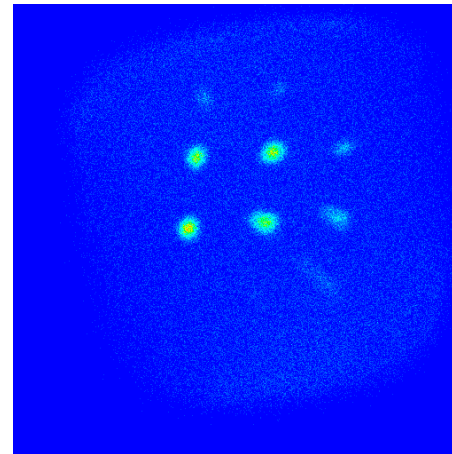
Simulation

- 36mm MSGC-PMT gap.
- 2x2, 30 mm \varnothing PMT.
- 2E6 photons/neutron.
- Holes on 4.3mm pitch.
- FWHM in centre 1.4mm
- **Measurements close to simulation**

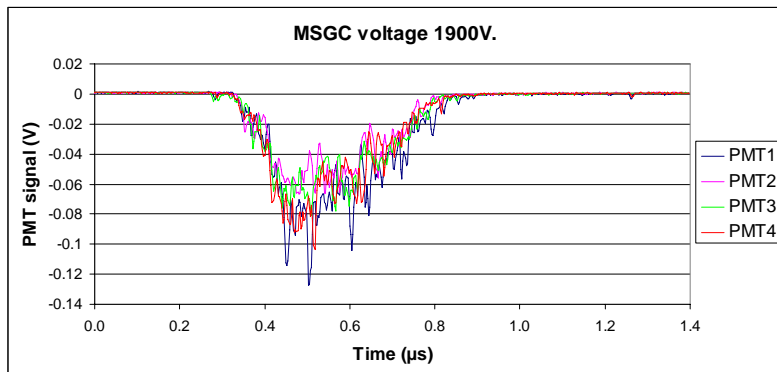


Measurement

- 2250V BIDIM 80
- MSGC-PMT gap 35 mm
- Holes on 4.3mm pitch
- FWHM in centre 1.3mm
- FWHM in centre 1.3mm



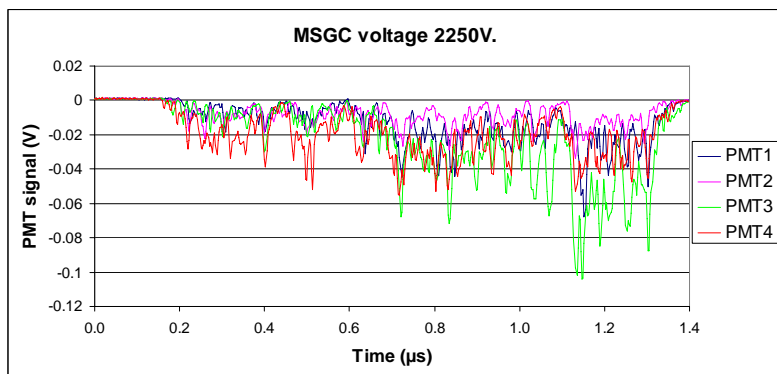
GSPC output signals



BIDIM 80 1900 V 3He/CF4 2b / 2b

MSGC virtual

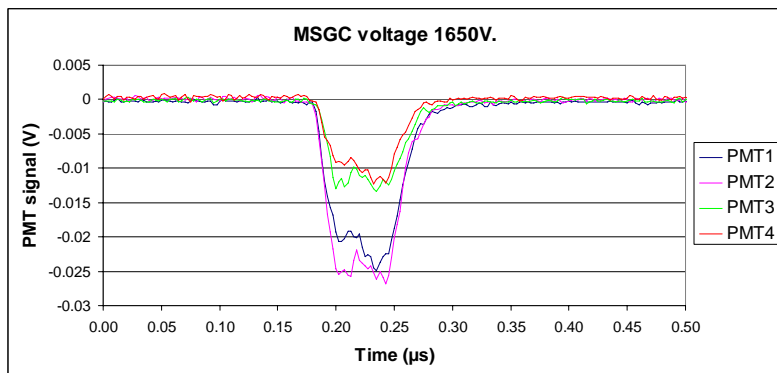
➤ **> 300 ns long**



BIDIM 80 2250 V 3He/CF4 2b / 2b

MSGC virtual

➤ **> 1 μ s long**



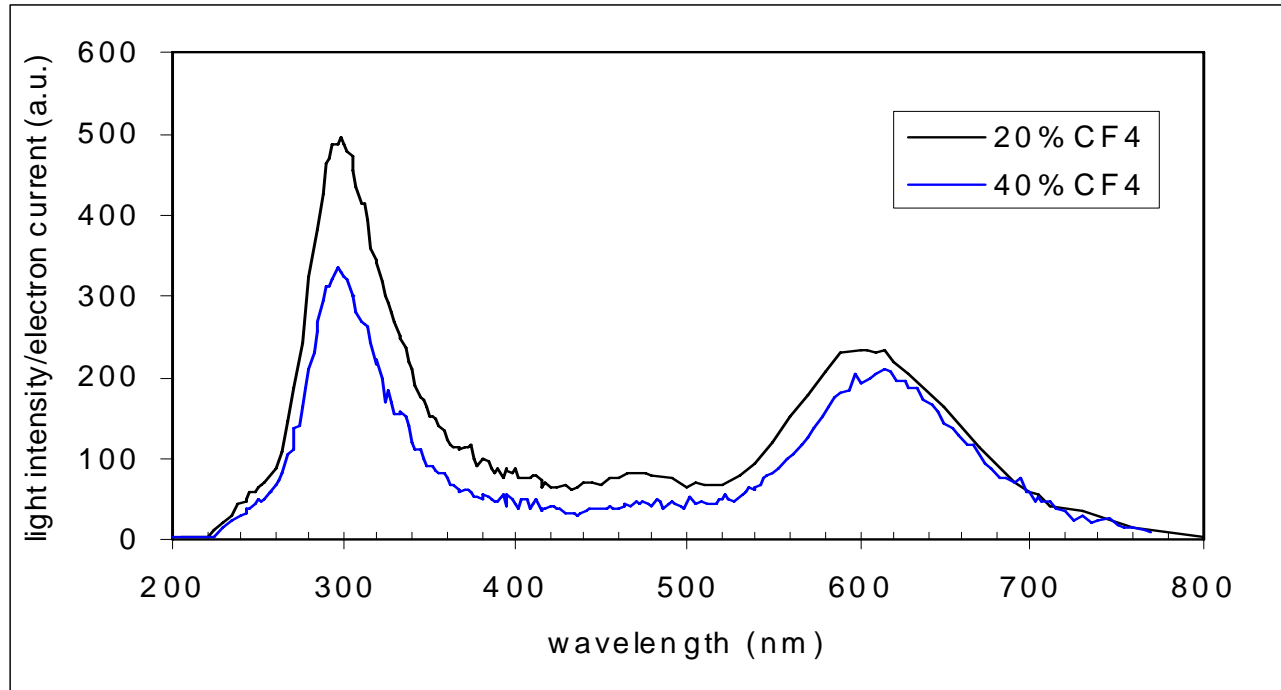
LIP GSPC 1650 V 3He/CF4 2b / 3b

MSGC real

➤ **60 ns long**



Task How can we exploit this spectrum



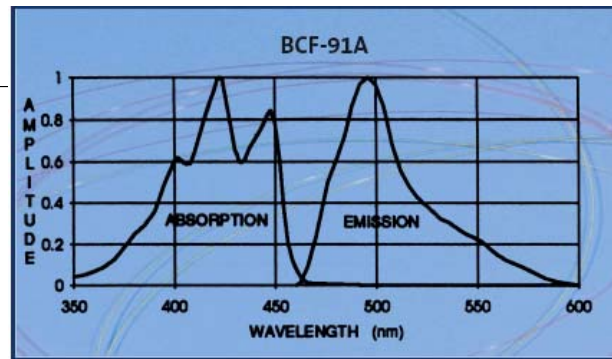
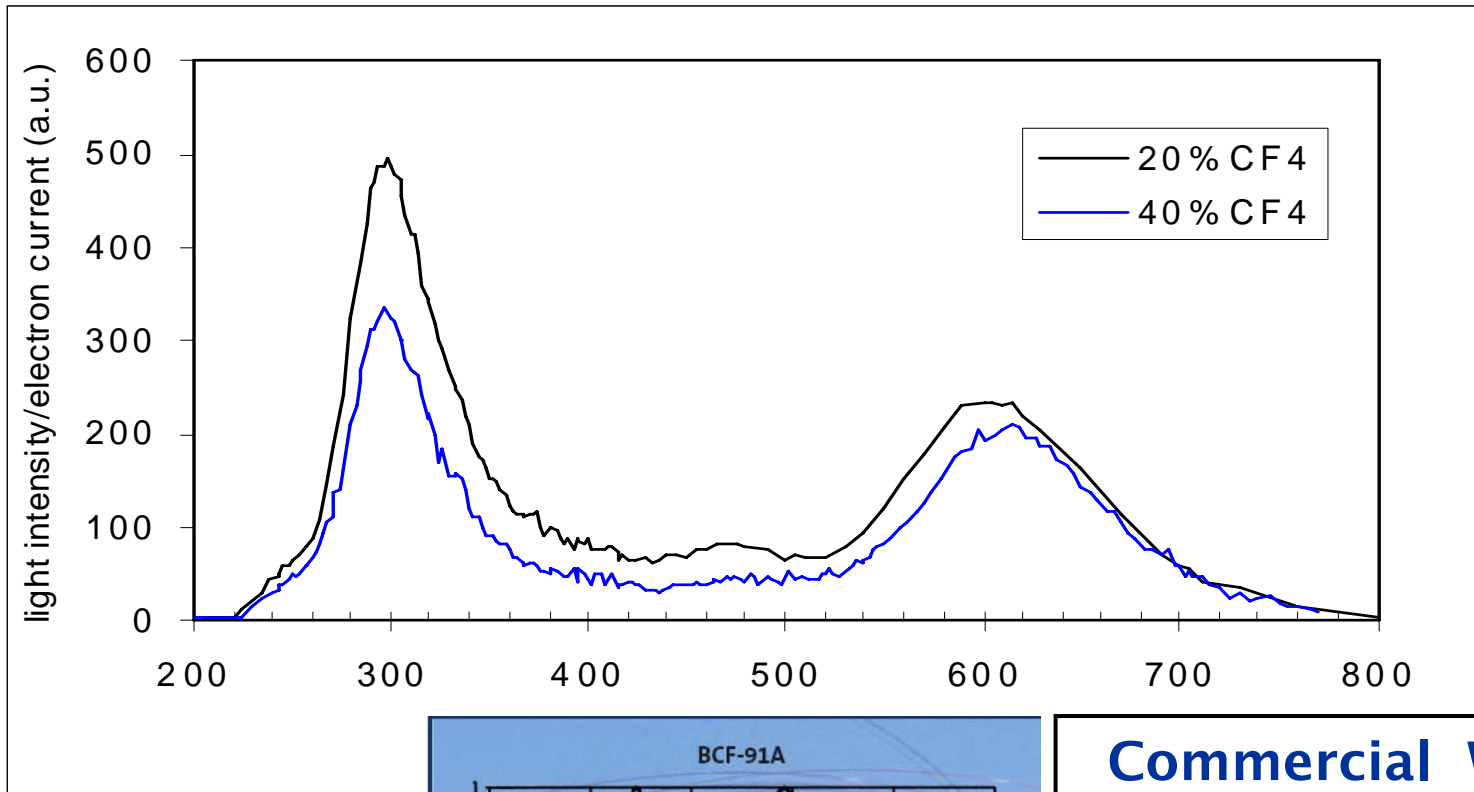
Anger camera PMT readout
Quartz window PMTs
Blue sensitive PMTs
Red sensitive PMTs
Can we Wavelength Shift?

WLS fibre readout?

Other?
APDs?



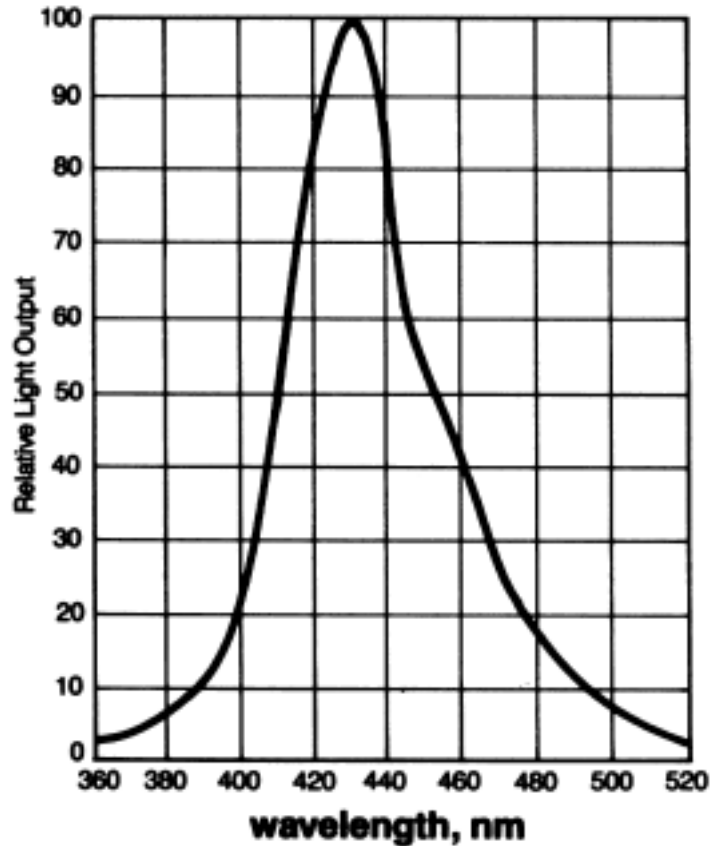
WLS Fibre readout?



**Commercial WLS fibre
absorption band
incompatible**

WLS Fibre readout

Absorption spectrum



Bicon WLS bar

300 – 360nm to 425 nm

Francisco's experiences of coating GEMs with P-terphenyl?



Science & Technology Facilities Council

ISIS

Task 22.3: What we said

Readout investigation

Quantify the advantages of using quartz, blue and red PMTs

Explore the potential of:

Single cathode PMTs
APDs

PS PMTs
SiPMTs

MA PMTs
Hybrid PMTs

Other

Utilize digitizer systems to capture detector / readout responses for analysis and optimisation and algorithm development

Electronics

Develop suitable

Voltage divider networks,

Front end electronics

Signal processing hardware to carry out neutron identification and position reconstruction in real time and display to a PC

Use results in the production of a scalable demonstrator detector



Task 22.3: What we said

To progress readout and electronics development

ISIS, Julich and Munich desire access to GSPC detectors

Is it feasible to construct a further two prototype detectors within the project?

What size?

Capable of evaluating 3 x 3 array of 30 mm dia PMTs?

Or mounting a 5 inch PM PMT

What cost?

How long to produce?

Needs input from ILL and LIP



Task 22.3: Deliverables

Deliverable	Description	Month
22.3.1.1	Experimental report on PMT anger camera	28
22.3.2.1	Experimental report on PS and MA PMTs	28
22.3.3.1	Experimental report on innovative light detecting devices	36
22.3.4.1	Evaluation report on processing schemes	28
22.3.6.1	Front end pulse processing report	30
22.3.7.1	Readout electronics architecture report	30
22.3.7.2	Hardware implementation report	40

